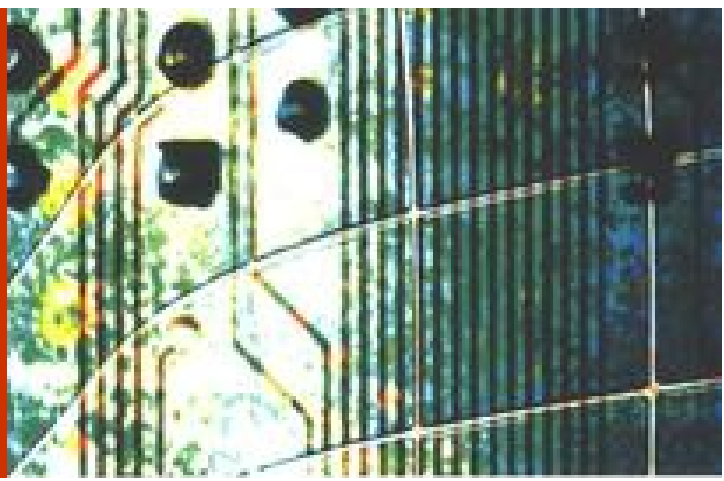
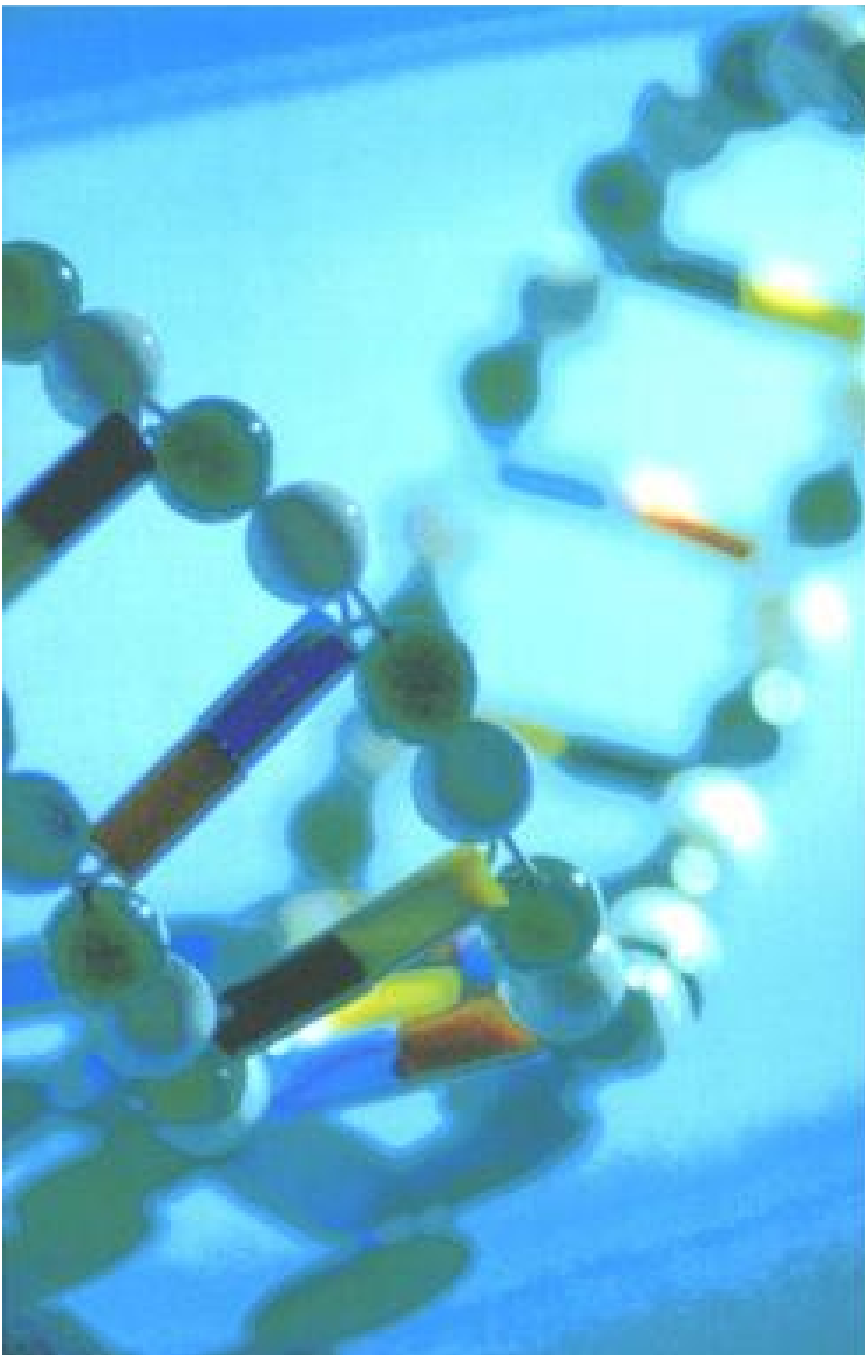


BIO MEDICAL



2016



List Of Ours Biomedical Sensor

- ▣ Pulse and Oxygen in Blood Sensor (SPO2)
- ▣ Blood Pressure Sensor (Sphygmomanometer)
- ▣ Galvanic Skin Resonse Sensor (GSR-Sweating)
- ▣ Airflow Sensor (Breathing)
- ▣ Electrocardiogram(ECG)
- ▣ Body Temperature Sensor



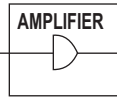
BIO MEDICAL INSTRUMENTATION SYSTEM

Introduction

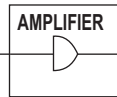
- Bio medical instrumentations system has 10 different body related sensors.
- Onboard to connect various parameter from it.
- It has **MATLAB / LABVIEW / ARDUINO / ANDROID** Interfacing to analyze the results for research.
- It has a graphical user interfaces explain to bachelargrade students .
- Move over the board is reprogrammable according to your need.

List Of Biomedical Sensor

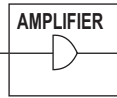
1) Patient Position sensor (Accelerometer)



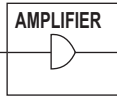
2) Pulse and Oxygen in Blood Sensor (SPO2)



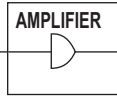
3) Blood Pressure Sensor (Sphygmomanometer)



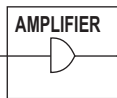
4) Galvanic Skin Resonse Sensor (GSR-Sweating)



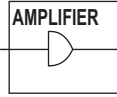
5) Airflow Sensor (Breathing)



6) Electrocardiogram(ECG)



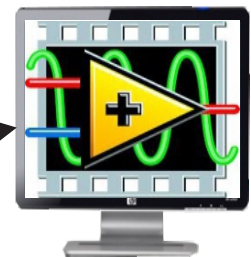
7) Body Temperature Sensor



6 Channel Controller



MAT LAB SOFTWARE



LAB VIEW SOFTWARE



INTERNET



ZIGBEE



ANDROID



All The Technology You need

ISO 9001:2008
Certified Company

ADVANCE TECH INDIA PVT. LTD

www.atechindia.com. E-mail: atechindia@gmail.com

BIO MEDICAL INSTRUMENTATION SYSTEM

Specification

Power supply	+5v/2a
Computer interface/software interface	Matlab, labview, any software which has serial interface
ADC resolution	10 bit resolution
SENORS interface	Patient Position sensor (Accelerometer) Pulse and Oxygen in Blood Sensor (SPO2) Blood Pressure Sensor (Sphygmomanmeter) Galvanic Skin Response Sensor (GSR-Sweating) Airflow Sensor (Breathing) Electrocardiogram(ECG) Body Temperature Sensor
Wireless interface	Bluetooth Zigbee Gsm
Wired interface	Ethernet Usb 2.0 interface

Facility For Transfer Of Data Through

- 1 > Bluetooth
- 2 > Gsm
- 3 > Body application network/Zigbee
- 4 > Ethernet

Some Experiment Cover

- Pulse oximeter / phythysmogram (HRM)
- Respiration rate measurement (RRM)
- Blood pressure measurement (BPM)
- Lie detector based on skin impedance change.



All The Technology You need

ISO 9001:2008
Certified Company

ADVANCE TECH INDIA PVT. LTD

www.atechindia.com. E-mail: atechindia@gmail.com