

STRAIN GAUGE TRAINER

Introduction

This trainer is used to perform all the experiments of **STRAIN GAUGE TRAINER**. It is useful for experimentation as well as project work . This trainer is designed in fashion, all sections can be operate individually. This is useful for and B.Tech And M.Tech. For research / Project work we give Re-programmable facility & PC interface with Lab view Easy to perform, This trainer is very useful for **ECE, EEE, EE, ME** and **I&C Eng** streams.

Features

- Self-Contained and Easy To Operate.
- Sensitive, Linear, Stable & Accurate.
- Test-Points to Observe Input Output of Each Block.
- Onboard Offset Null Adjustment.
- Built In DC Power Supplies +5V,-5V DC.
- 3½ Digits LED Display.

Technical Specification

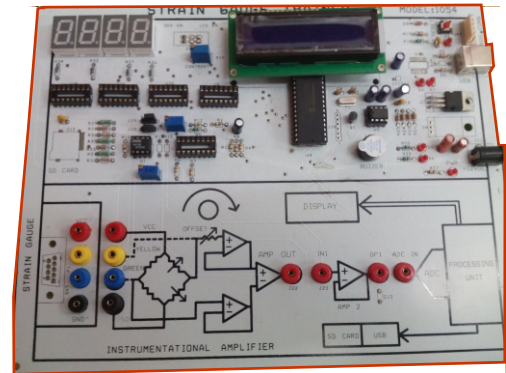
- PIC 18F452 μ Cr based trainer system
- Strain Gauge (350 Ω): 2 Nos.
- Gauge Factor: 2.11, $\pm 1\%$
- Maximum Weight Capacities: 1.5kg
- Cantilever Material: Stainless Steel
- Bridge Voltage: +5 V DC
- External Cantilever Arrangement
- High Repeatability and Reliability
- Bridge Configuration: Half Bridge
- Display: 3½ Digits LED/16X2 LCD Display
- Power Supply: 230 V 50 Hz
- Weight: 1.5 Kg (Approx.)
- Accessories Included: Power Cord, User's Manual, Standard Weights and Patch Cord

EXPERIMENTS

- Study of strain, stress measurement using strain gauges using cantilever method.
- Study of linear range of operation of strain measurement.
- Pressure measurement using strain gauge sensor method.

Optional

- Output data on PC using USB Based Data Acquisition system and with reprogrammable facility



All The Technology You need

ISO 9001:2008
Certified Company



All the Technology You Need

ADVANCE TECH INDIA PVT. LTD

Website: www.atechindia.com. E-mail: atechindia@gmail.com