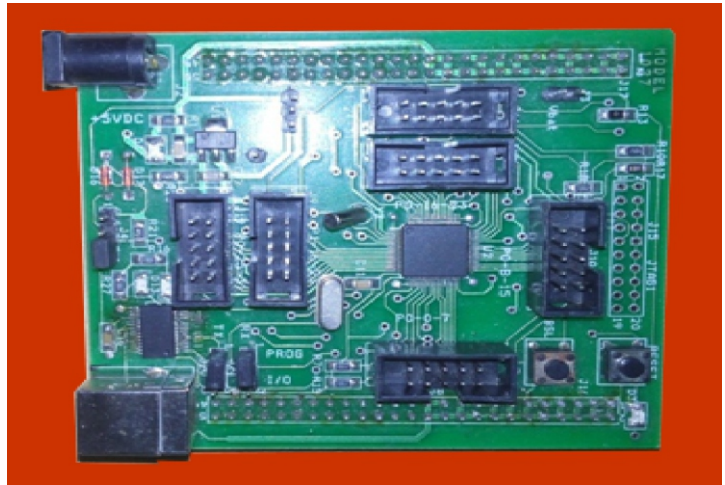


ARDUINO MEGA 2560



INTRODUCTIONS

- The Arduino Mega 2560 is a microcontroller board based on the ATmega2560It has 54 digital input/output pins (of which 15 can be used as PWM outputs), 16 analog inputs, 4 UARTs (hardware serial ports), a 16 MHz crystal oscillator, a USB connection, a power jack, an ICSP header, and a reset button. It contains everything needed to support the microcontroller; simply connect it to a computer with a USB cable or power it with a AC-to-DC adapter or battery to get started.

SPECIFICATION

- | | |
|---------------------------|---|
| ▪ Microcontroller | Atmega2560 |
| ▪ Operating Voltage | 5V |
| ▪ Digital I/O Pins | 54 (of which 15 provide PWM output) |
| ▪ Analog Input Pins | 16 |
| ▪ DC Current per I/O Pin | 40 mA |
| ▪ DC Current for 3.3V Pin | 50 mA |
| ▪ Flash Memory | 256 KB of which 8 KB used by bootloader |
| ▪ SRAM | 8KB |
| ▪ EEPROM | 4 KB |
| ▪ Clock Speed | 16 MHz |



AdvanceTech India Pvt. Ltd.

www.atechindia.com



OUR PRIME CUSTOMERS

