

**AdvanceTech India Pvt. Ltd.**

**www.atechindia.com**

**Automatic Weather Station Data Logger**



**Automatic Weather Station Successfully Installation By AdvanceTech**

- ★ Y.S Parmar Solan (H.P)
- ★ Hau Hisar (H.R)
- ★ Nhpc kullu
- ★ Nit Hamirpur
- ★ Horticulture Research Center Mashobra (H.P)
- ★ Pedecration Industry Dehradun (U.K)
- ★ Nit Kurukshetra (H.R)
- ★ Nit Kurukshetra

# Block Diagram Of AWS

## Sensors

- Temperature Sensor
- Humidity Sensor
- Wind Speed Sensor
- Wind Direction Sensor
- Raingauge Sensor
- Solar Radiation Sensor
- Barometric Pressure Sensor
- Module Temperature Sensor
- Soil Moisture & Temp Sensor

Wifi/GPRS/Ethernet/4-20mA

Data Logger

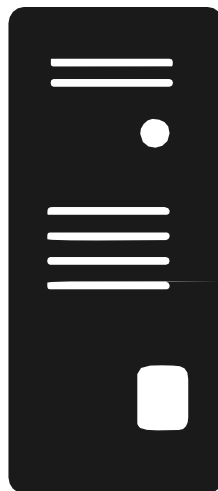


Cloud

Wifi/GPRS/Ethernet/4-20mA



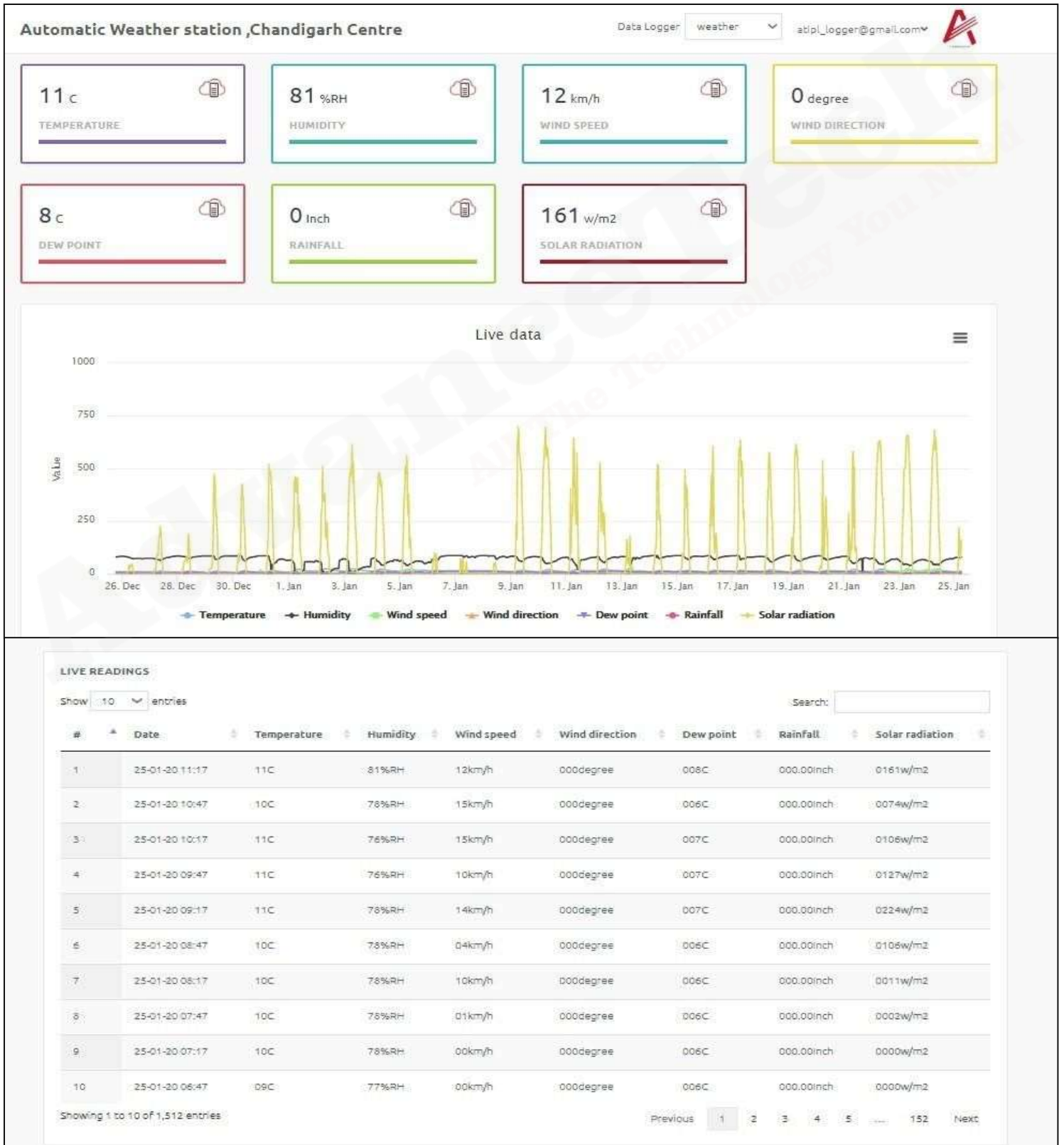
Server



Application

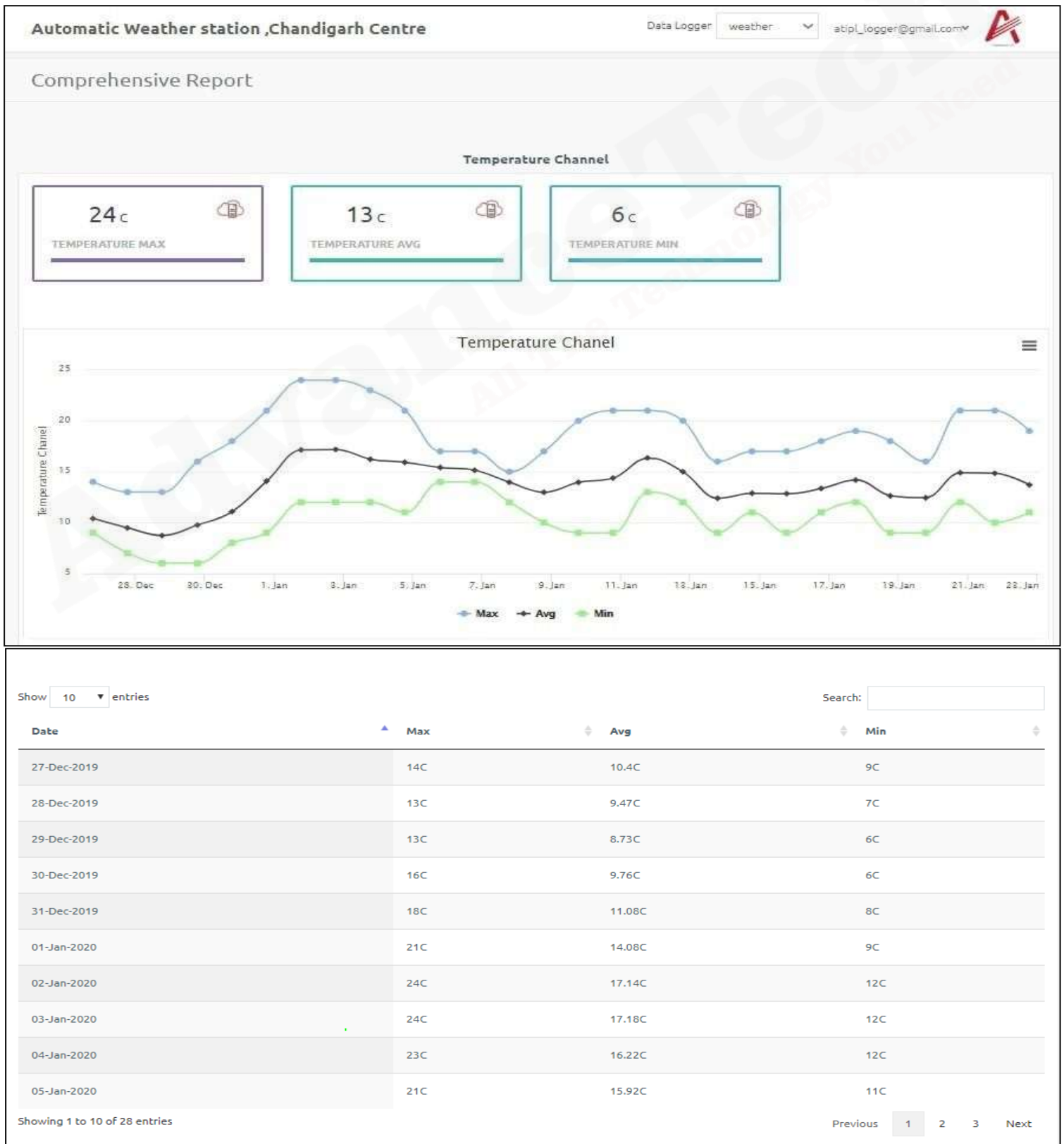
# AWS Online Cloud Based

## Dashboard



# Daywise Max/ Min/ Avg Report

## Report



# Mobile Application View

Mobile

**ATIPL**

weather

Date: 05-10-2019 Time: 11:18

**29 C**  
Temperature

**58 %RH**  
Humidity

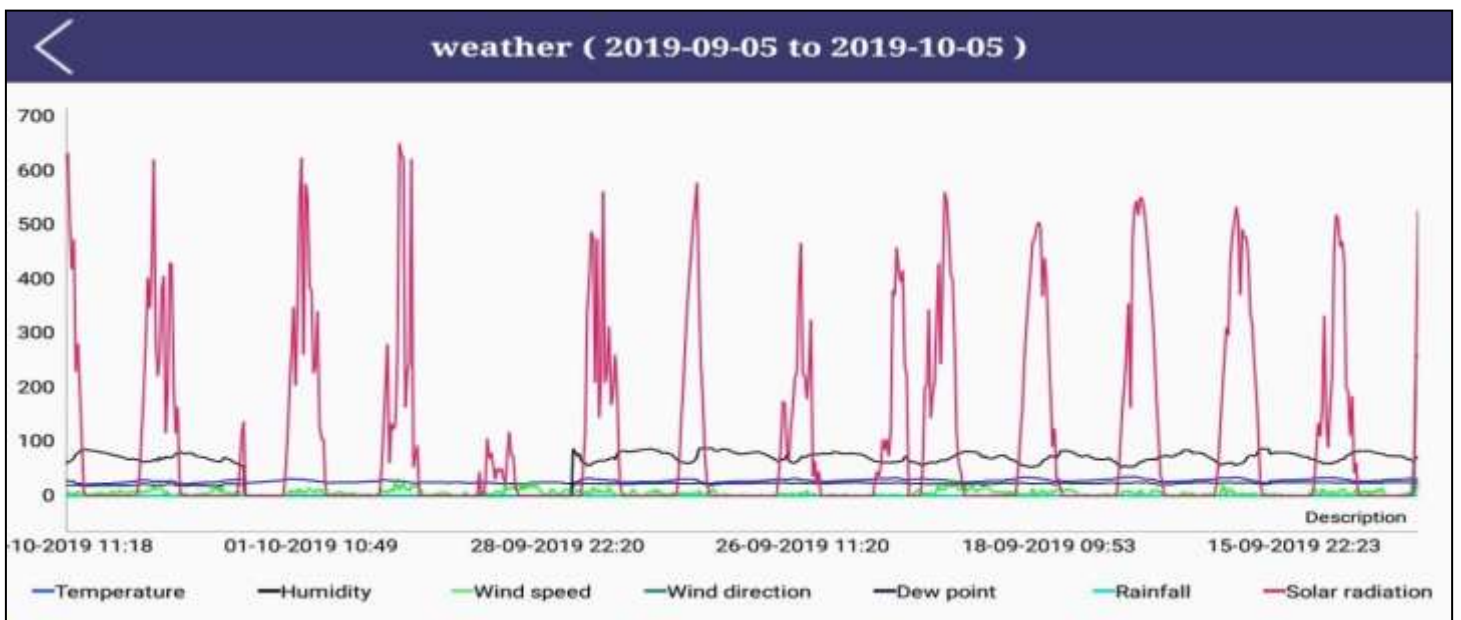
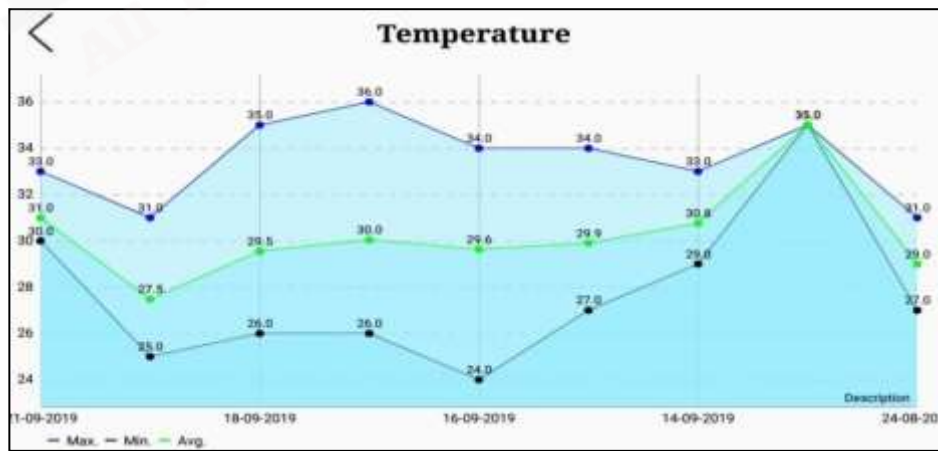
**04 km/h**  
Wind speed

**000 degree**  
Wind direction

**Report**

weather 2019-08-24 To 2019-09-24 Update

Date	Temperature	Humidity	Wind speed	Wind direction	Dew point	Rainfall	Solar radiation
21-09-2019 20:54	30 C	64 %RH	02 km/h	000 degree	023 C	000.00 Inch	0000 w/m2
21-09-2019 20:24	30 C	63 %RH	00 km/h	000 degree	022 C	000.00 Inch	0000 w/m2
21-09-2019 19:54	30 C	62 %RH	03 km/h	000 degree	023 C	000.00 Inch	0000 w/m2
21-09-2019 19:24	31 C	63 %RH	05 km/h	000 degree	023 C	000.00 Inch	0000 w/m2
21-09-2019 18:54	31 C	61 %RH	08 km/h	000 degree	023 C	000.00 Inch	0000 w/m2
21-09-2019 18:24	31 C	60 %RH	12 km/h	000 degree	023 C	000.00 Inch	0000 w/m2





### Introduction

- **AdvanceTech India is proud to introduce a new generation of weather station technology, our environmental are redesigned specifically for recording environmental conditions with solar power and wireless alerts, and recordings**

### Data Logger Features

- **8 Channel.**
- **Analog / digital /4-20 mA / 0-5V input ports.**
- **Rs232/Rs485/Modbus communication port .**
- **Low power, ideal for remote siting**
- **Full instructions & Manufacturer's support**
- **LCD display for onsite reading**
- **Logging option con\_lguration by minutely, hourly, Daily**
- **Optional - GUI software for display**
- **Extensive 8 Mb on-board \_ash memory (Non-volatile) Around 1,000,000 Sets**
- **Hex keyboard to set the various parameters, to con\_lgure the channel**
- **Lock key facility**
- **Battery indicator**
- **Reset switch facility**
- **GSM/GPRS Facility available (Remote Communication)**
- **SD card storage facility available (Local Communication)**
- **4 meter Tilttable pole**
- **Mains or solar powering**
- **Size table top Enclosure: Hand Held / Wall mountable / Weather proof (IP65)**

### Optional

- **Wired Interfacing Method**
  1. Modbus
  2. Ethernet
- **Wireless Interfacing Method**
  1. GSM/GPRS
  2. WIFI



AdvanceTech India Pvt. Ltd.

[www.atechindia.com](http://www.atechindia.com)

AdvanceTech  
All The Technology You Need



### OUR PRIME CUSTOMERS



## Sensor Specification

### Relative Humidity

- **Measurement Range** 0 to 100% RH
- **Accuracy**  $\pm 2\%$  RH
- **Output** 0 – 5v
- **Response** <15 sec with outfilter

### Temperature

- **Measurement Range** 0 to 80 °C
- **Accuracy:**  $\pm 0.5$  °C
- **Output** 0 – 5v
- **Response** <15 sec with outfilter

### Solar Radiation Sensor

- **Resolution and Units** 1 W/m<sup>2</sup>,
- **Range** 0 to 1800 W/m<sup>2</sup>,
- **Accuracy**  $\pm 5\%$  of full scale.

### Tipping Bucket Rain Gauge

- **Housing:** High Impact Polypropylene, UV Inhibited
- **Transducer:** Tipping Bucket of specially formulated plastic for low surface tension
- **Switch:** Dry reed switch
- **Output:** Less than 0.1 sec. switch closure
- **Capacity:** 6 to 24 VDC @ 500ma
- **Resolutions Available:** 0.01 inches
- **Accuracy:** 2% at 1.5" perhour



### OUR PRIME CUSTOMERS



## Sensor Specification

## Wind Direction

- **Range** 0 to 360°
- **Display Resolution** 16 points (22.5°) on compass rose, 1° in numeric display
- **Accuracy** ±3°

## Wind Speed

- **Resolution and Units** Measured in 1 mph. Other units are converted from mph and rounded to nearest 1 km/h, 0.1 m/s, or 1 knot
- **Range** 1 to 200 mph, 1 to 173 knots, 0.5 to 89 m/s, 1 to 120 km/h
- **Accuracy** ±2 mph (2 kts, 3 km/h, 1 m/s) or ±5%, whichever is greater
- **Maximum Cable Length** 240' (73 m). Maximum wind speed reading decreases as length of cable from Anemometer to ISS increases. At 140' (42 m), maximum speed is 135 mph (60 m/s). At 240', the maximum is 100 mph



AdvanceTech India Pvt. Ltd.

www.atechindia.com

AdvanceTech  
All The Technology You Need

## OUR PRIME CUSTOMERS

