

## Data Logger Features

- 4 Channel
- Analog / digital / 4-20 mA / 0-5V input ports.
- 16 x 2 Lcd display.
- Wi-Fi Communication
- USB Port facility.
- GUI software for online server.
- 1MB Flash memory.
- Data download in excel format.
- Single relay for controlling the application.



## Optional (Tick to Include)

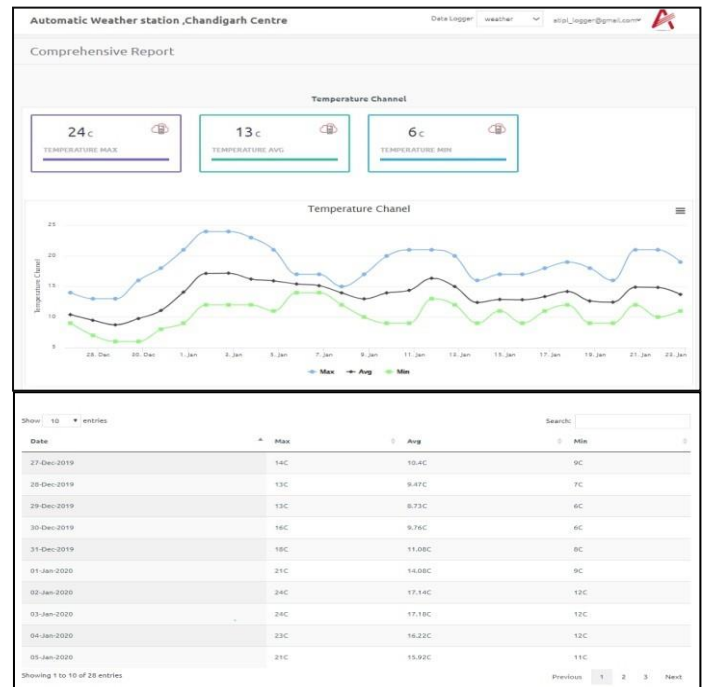
- Wi-Fi Interface
- Battery Back up to 6-8 hour

## Information Display Features (Optional)

- Indoor Led Board
- Outdoor Led Board

## Software (Optional)

- Window DAQ S/W
- Cloud/Mobile App S/W
- MODBUS S/W



Live Report from Cloud